



£250,000

🔑 TENURE: Freehold

📊 EPC RATING: N/A

💷 COUNCIL TAX BAND:

Lawnhead Stafford

Yew Tree Farm Lawnhead
Stafford Staffordshire

🛏️ 3 🚿 2 🛋️ 1

Could this Dutch Barn be your very own Grand Design? Having planning permission for change of use from agricultural building to dwelling house which would comprise of a three bedroom detached property with superb rural views and situated on a substantial plot of approximately 1.6 Acres.

Internally the current plans consist of a spacious open plan living room, large open plan dining/family kitchen, three bedroom, bathroom and En-suite to bedroom one. The plot is located close to excellent commuter links and only a short drive into Stafford Town Centre and the beautiful Village of Eccleshall which enjoys excellent restaurants and amenities. For further information regarding the approved planning permission, please see Stafford Borough Council planning portal to view application, associated documents and restrictions. The planning application number is 21/35219/PAR.

- Detached Dutch Barn With Planning Permission
- Superb Rural Location, Approx 1.6 Acre Plot
- Planning For 3 Bedrooms & 2 Large Receptions
- Stunning Rural Views & Excellent Nearby Commuter Links
- See Stafford Borough Council Planning Portal

You can reach us 9am to 9pm, 7 days a week

14 Salter Street, Stafford, Staffordshire, ST16 2JU

01785 223344

hello@dourishandday.co.uk



Planning Application

Planning has been granted for change of use from an Agricultural building to a dwelling house. Further information, including the plans approved, can be found on the Stafford Borough Council planning portal. The application number is 21/35219/PAR

Viewing Arrangements

By appointment only through the selling agent. You can reach us on 01785 223344 from 9.00am to 9.00pm - 7 days a week.



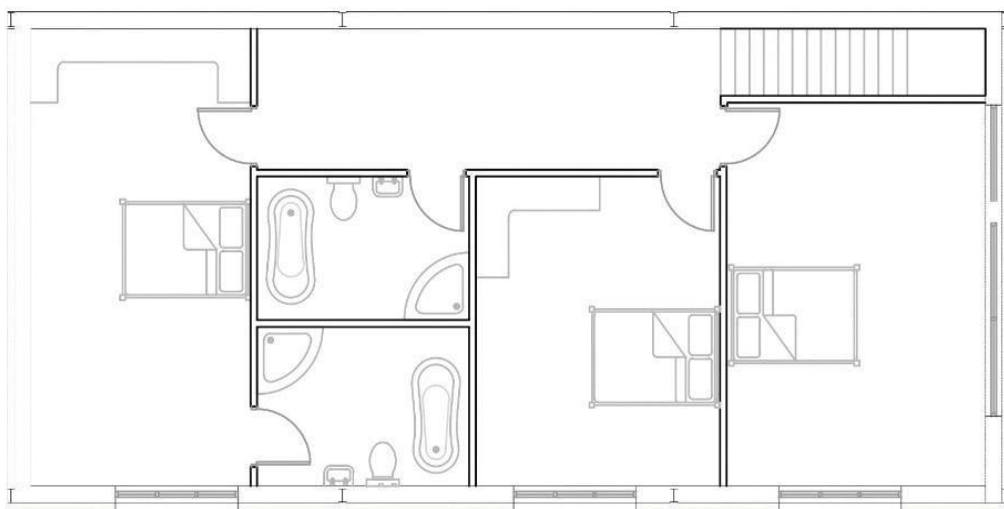
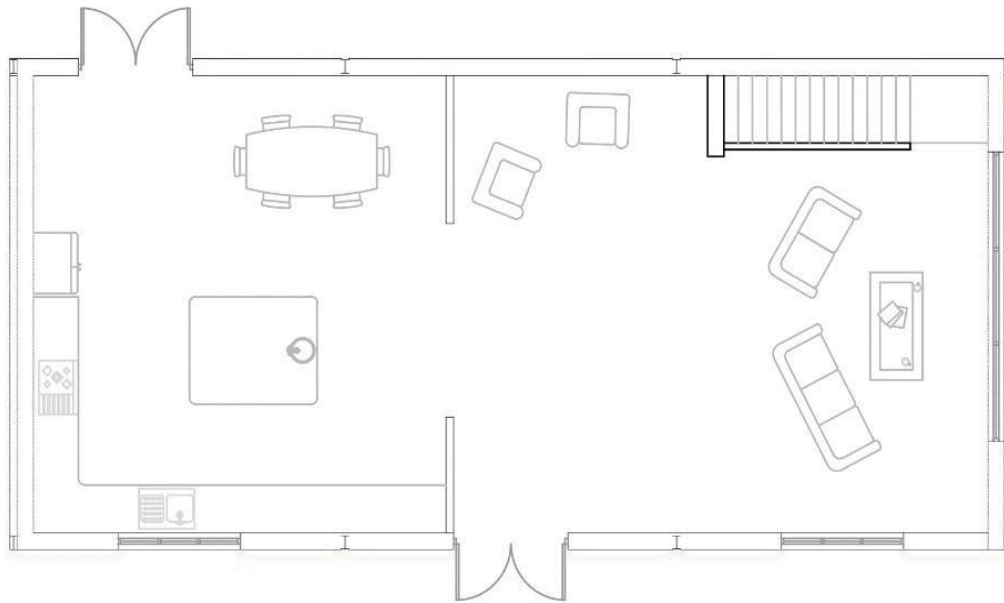
You can reach us **9am to 9pm**, 7 days a week

14 Salter Street, Stafford, Staffordshire, ST16 2JU

01785 223344

hello@dourishandday.co.uk





IMPORTANT NOTICE Dourish & Day for themselves and for the vendor or lessors of this property whose agents they are given notice that: (i) the particulars are set out as a general outline only for the guidance of intending purchasers or lessees, and do not constitute, nor constitute part of, an offer of contract, (ii) all descriptions, dimensions, references to condition and necessary permissions for use and occupation, and other details are given in good faith and are believed to be correct but any intending purchasers or tenants should not rely on them as statement or representation of fact but must satisfy themselves by inspection or otherwise as to the correctness of each of them, (iii) no person in the employment of Dourish & Day has any authority to make or give any representation or warranty whatever in relation to this property.

You can reach us **9am to 9pm**, 7 days a week

14 Salter Street, Stafford, Staffordshire, ST16 2JU

01785 223344

hello@dourishandday.co.uk